

Repair Movies

- mechanical -



XperiaTM acro S
LT26w

CONTENTS

1 Movies 3

1.1 Disassembly 3

1.2 Reassembly 3

2 Revision History 4

To view the embedded repair movies in this document, Acrobat Reader version 8 (or later) and Flash Player version 8 (or later) must be installed on your computer.

For best picture quality, select “Actual size” or “100%” as zoom level in Acrobat Reader. To magnify while keeping an acceptable picture quality, increase the zoom level to 200%.

If the movies appear to be jerky or blurred when viewing on-line, this is probably caused by the connection speed being too slow. In that case, right-click with the mouse on the document name and select Save Target As to download the repair movie document for off-line viewing.

For general information about repair movies, refer to 1220-1333: Generic Repair Manual - mechanical

1 Movies

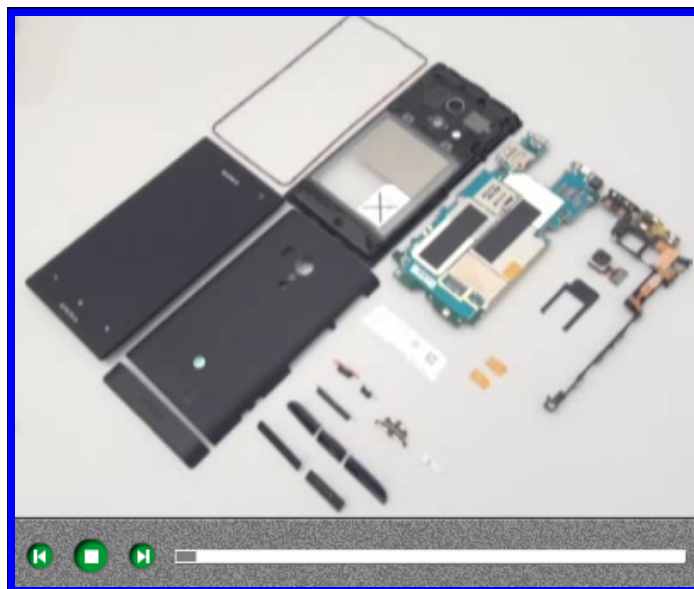
1.1 Disassembly

- SIM Connector
- Cover Bottom
- Core Unit Label
- Cover Back
- Keys (a) & Charger PAD connector (b) & Caps (c)
- Touch/Display Front Cover Assy
- Gasket Main
- Camera with the holder
- Rear Cover Assy
- Spacer Felica (a) & Sheet Key FPC (b) & PBA Flex Module (c) & PBA (d)



1.2 Reassembly

- PBA (a) & PBA Flex Module (b) & Sheet Key FPC (c) & Spacer Felica (d)
- Rear Cover Assy
- Camera with the holder
- Gasket Main
- Touch/Display Front Cover Assy
- Caps (a) & Charger PAD connector (b) & Keys (c)
- Cover Back
- Core Unit Label
- Cover Bottom
- SIM Connector



2 Revision History

Rev.	Date	Changes / Comments
1	2012-Jul-27	Initial release